



WE NEVER STOP WORKING FOR YOU

Half/Pack

Commercial and Residential High-Compaction Front Loader



**Environmental
Solutions Group®**

Choose the industry leader in durability, productivity, and lowest total cost of collection.

www.Heil.com

Heil Half/Pack

The most popular frontloader for over 50 years... For more than one reason.

The Half/Pack® body has consistently delivered proven performance in some of the most demanding environments imaginable, earning a loyal following of users who rely on its unmatched dependability and appreciate its lowest total cost of ownership.

Heil® RCVs continue to set the standard for front loaders with the evolution of innovative new features that enhance functionality. Our patented Shur-Lock tailgate locks, double-walled and lapped hopper sides, and an industry-leading interlaced ladder subfloor foundation mean that your Half/Pack is built for a long, reliable lifespan. The Half/Pack now comes with a 20 cubic-yard option, increasing the maneuverability of the vehicle due to a shorter wheel base, and allowing for FET exemption*.

When combined with The Curotto-Can, the Half/Pack becomes the most productive residential collection vehicle on the road. With eyes-forward, operators are safer, contamination can be identified at the source, and no carts are lost. With the Curotto-Can, fleet owners have the ability to handle take-all routes and won't need a second truck for bulk collection.

Add that to the Heil brand's century-old heritage of commitment to customer satisfaction, and you can feel certain that when you choose a Half/Pack, you are getting the most productive, durable, safe, and easy-to-maintain front loader available.

* Heil does not provide tax advice. Please consult your tax advisor regarding the specific tax implications of your selected product.



Shown with optional Half/Pack LowRider® Body and Curotto-Can® Residential Package

Infinitely Customizable Configurations To Maximize YOUR Route Productivity

Lowest Total Cost of Collection (TCC)

The ultra-efficient Half/Pack provides unbeatable productivity to lower your TCC.

Can add up to:

\$97,420 Savings

Over the lifetime of the truck

2018 Improvements

Reduced proximity switches and grease locations, which result in less maintenance costs.

Can add up to:

\$10,330 Savings

Over the lifetime of the truck

H.A.L.O Controls

Newly updated controls reduce maintenance & training costs, all while increasing productivity*.

Can add up to:

\$48,140 Savings

Over the lifetime of the truck

*Only available on commercial FELs

Lighting Cylinder Package

Decreased cycle time increases productivity.

Can add up to:

\$8,600 Savings

Over the lifetime of the truck

CNRg CNG Tailgate

Removable valve cover plates allow for quick and easy access, which reduces maintenance costs.

Can add up to:

\$20,600 Savings

Over the lifetime of the truck

Zinc Plated Hydraulic Tubes

Reduces maintenance and downtime costs.

Can add up to:

\$9,750 Savings

Over the lifetime of the truck



Available with optional CNRg® Tailgate



Available with articulating arms for EonicSD™ chassis



Available with Curotto-Can commercial grabbers



Optimized Weight LowRider body package

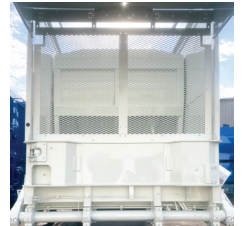
Heil Half/Pack Redefining What Productivity Looks Like

Half/Pack Standard Features

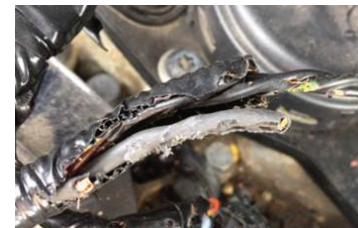
- + **SOLID FOUNDATION** - The interlaced subframe provides exceptional strength and durability, which means your Half/Pack will enjoy a long lifespan and excellent resale value.
- + **DOUBLE-WALLED HOPPER** - High tensile strength steel withstands the exceptional forces of the compaction cycle and ensures maximum payloads. Our exclusive double-wall hopper reduces corrosion, which increases long-term durability.
- + **HARDENED ROD SCRAPERS ON ARM CYLINDERS** - The scrapers help to minimize ingestion of material, such as paint, melted plastic, and leachate into the hydraulic system. This reduces the chance of objects entering the cylinder seal and causing damage.
- + **ZINC-PLATED HYDRAULIC TUBES** - Use of zinc-plated hydraulic tubes reduces hydraulic leak-causing corrosion, lessening the frequency with which components need to be replaced over the life of the body. This reduces maintenance and downtime costs.
- + **HYDRAULIC TUBE COVERS** - Durable covers protect tubes and hoses from damage, resulting in less maintenance.
- + **RAISED PACKER TRACKS** - Elevated packer and eject tracks keeps them from operating in abrasive debris or corrosive leachate. Heavy-duty wear strips are a standard feature.
- + **BODY BACKUP ASSIST LIGHTS** - Standard backup assist lights mounted on the body help to illuminate your surroundings while in reverse.
- + **ILLUMINATED PUSH-BUTTON CONTROLS** - Easy to read and understand touch button body, packer, pump and lighting controls with indicator lights come standard.



- + **SHUR-LOCK TAILGATE LOCKS** - The Heil in-cab operated tailgate locking system not only keeps payloads secure but also enables the operator to unlock and open the tailgate and discharge the payload from the safety of the cab. In-cab, on display notifications confirm when the tailgate is sealed.
- + **UPDATED INTEGRATED DISPLAY W/ ON-BOARD DIAGNOSTIC TOOL** - Standard 7" In-Sight display provides real-time feedback for optimal operator control, and allows maintenance personnel to easily diagnose problems. Also integrated with 3rd Eye® camera feeds.
- + **LESS TIME IN THE SHOP** - The Half/Pack features our Service Smart design, which simplifies routine maintenance and helps keep your asset out of the shop and on route - servicing your customers.
- + **STREETWISE HYDRAULICS** - Our exclusive "clean front head" relocates the hydraulic body valve from the front head to under the side of the body. This design reduces the influence of engine heat on the hydraulic components, as well as improving access to the valve bodies. This also means improved safety and reliability, all while reducing downtime.
- + **RELIABLE SENSOR TECHNOLOGY** - The use of tamper-proof in-cylinder and arc sensors seamlessly gauge component locations for effortless control. This eliminates proximity switches that previously required frequent adjustment and maintenance, resulting in less downtime and maintenance costs.
- + **FULLY-ENCLOSED FRONT HEAD** - Fully-enclosed up to 19" from the bottom of the hopper floor, to the bottom of the arc-sensor opening. This reduces the chance of waste water escaping from the body onto the chassis components.



Monitor is integrated into the display



*This feature should only be used with ANSI standard containers

OPTIONAL ODYSSEY CONTROL FEATURES

Optional Odyssey® Controls feature a refined hydraulic and electronic control system for maximum efficiency, reliability and precise control. Odyssey controls come standard with an updated joystick that contains integrated Pack Extend and Pack Retract functions.

OPTIONAL HEIL AUTONOMOUS LIFT OPTION*

Semi-autonomous single button operation eliminates multi-control movement, reducing driver input by 82%. Greatly reduces training time & increases new driver productivity.

*Only available with optional Odyssey Controls

OPTIONAL 3RD EYE DIGITAL PACKAGE

Digital package allows you the ability to connect for service verification, body/chassis data, fuel tax reporting, and route management. Includes factory installed 3rd Eye® IRIS Collision Warning Radar, and the ability to connect up to six cameras with 1080p (FHD) resolution and 30FPS.

OPTIONAL RODENT-RESISTANT HARNESS LOOM

Optional rodent-resistant wiring harnesses are completely encapsulated in woven loom, greatly reducing down time from chewed wires.

OPTIONAL LIGHTNING CYLINDER PACKAGE

Saves four seconds in dump cycle time. Only available with optional Odyssey Controls.

Half/Pack

Optional Body Packages



Half/Pack Automated Front Loader with Curotto-Can

The Curotto-Can Automated Carry Can has the fastest load time of any automated system on the market and delivers a proven 25% to 30% productivity advantage over automated side loaders. By using the robust reliability and additional capacity of a front loader, this carry can delivers game-changing performance that will enable you to service more customers, more quickly, in more applications.

- + Fastest load time available — four to five seconds from wheel stop to wheel start.
- + 20% greater fuel efficiency due to less packing and idling.
- + Shorter wheelbases allow navigation through cul-de-sacs up to 25% faster.
- + Eliminate cart loss and associated costs.
- + Eyes-forward operation enhances operator and public safety as well as reduces the risk of repetitive stress injuries.
- + Having a uniformed front load fleet, requires fewer spare trucks and helps standardize your inventory.
- + Reduce contamination rates to less than 5%.
- + Low 108" cart dump height for safer operation — well below typical wires, trees and other overhead obstructions.
- + Load bulk material with easier access to container waste and eliminate the need for a chase truck.
- + Convert any commercial front loader to a residential collection unit in minutes.



Half/Pack Sierra

A Mid-Weight Package with Heavy-Duty Performance. Get proven heavy-duty performance in a mid-weight package, specifically designed for areas with weight restrictions.

- + The Half/Pack Sierra weighs just 17,050 lbs. vs. 19,300 lbs. for the same size standard Half/Pack, a weight reduction of 13%, meaning more than one ton of extra payload.
- + Fast packer and arm cycle times, plus up to a 10-ton payload capacity means that you can collect more quickly, without being overweight.
- + The Half/Pack Sierra contains the following standard features: Streetwise Hydraulics, Double-Walled Hopper, Shur-Lock Tailgate Locks, and Raised Packer Tracks.

State-of-the-art Design & Materials Maximize Payload Without Sacrificing Quality or Durability.

For waste hauling customers who demand larger legal payloads without jeopardizing durability and dependability, Heil offers the Half/Pack Sierra and Half/Pack LowRider front load refuse bodies. These optional body configurations are ideal for waste haulers in areas where weight requirements are more stringent, and want to transport the largest legal payload without the worry of incurring overweight citations.

Half/Pack LowRider

The new Heil Half/Pack LowRider delivers both residential and commercial performance that will change the way fleet owners define productivity and safety.

Hitting the streets 12" lower than a standard front loader and tipping the scales at 4,150 lbs. less than our standard Half/Pack, fleet owners can service more customers and pack up to two tons more payload. Add in Lightning Cylinders and you have a 23% faster container dump cycle when compared to a non-Lightning equipped Heil front loader. Combine all of this with Odyssey Controls and you have more uptime due to there not being any prox switches, cylinder cushions, air lines, or MAC valves. Check out our brochure and webpage for more information.



Heil Half/Pack Specifications

Recommended Chassis Requirements				Standard				Sierra				LowRider				
				20	23	28	32	20	23	28	32	20	23	28	32	
Body Specifications	Body Capacity		yd ³	20	23	28	32	20	23	28	32	20	23	28	32	
	Hopper Capacity		yd ³	12	12	12	12	12	12	12	N/A	10	10	10	N/A	
	Gross Capacity		yd ³	32	35	40	44	32	35	40	N/A	30	33	38	N/A	
	Gross Weight (approx.)		lbs.	18,000	18,100	19,300	20,000	16,300	16,400	17,100	N/A	13,750	13,950	15,350	N/A	
	(% Lighter Than Standard 28yd Half Pack)			7%	6%	0%	-4%	16%	15%	11%	N/A	29%	28%	25%	N/A	
	Overall Length (Arms down, forks fully tucked)		in.	365	377	409	422	365	377	409	N/A	371	390	422	N/A	
	Overall Width		in.	96				96				N/A	96			
	Overall Height	Arms Down	in.	108				108				N/A	97			
		Arms Up	in.	120				120				N/A	120			
	Hopper Opening		in.	81x94				81x94				N/A	83x95			
Body Drain Standard			Yes				No					Yes				
Hydraulic Specifications	Pump	Type		Single Vane				Single Vane				N/A				
		Maximum Operating Pressure		psi	2,500				2,500				N/A			
		Working RPM (Throttle Advance)			1,350 RPM				1,350 RPM				N/A			
		Flow at Working RPM			50 GPM				50 GPM				N/A			
	Oil Reservoir	Tank Capacity		gal.	51				51				N/A			
		Filters			3 micron return filter with in-cab monitor 100 mesh reusable suction screen				3 micron return filter with in-cab monitor 100 mesh reusable suction screen				N/A			
	Valves	Body Valve Type			Air over Hydraulic, Multi-section stack valve, 55 GPM @ 2,500 PSI relief valve to prevent overload damage				Air over Hydraulic, Multi-section stack valve, 55 GPM @ 2,500 PSI relief valve to prevent overload damage				N/A			
		Tailgate Valve Type			Electric over Hydraulic manifold, Multi-section stack valve combination, 13 GPM @ 2,500 psi relief valve to prevent overload damage				Electric over Hydraulic manifold, Multi-section stack valve combination, 13 GPM @ 2,500 psi relief valve to prevent overload damage				N/A			
	Hydraulic Specifications	Pump	Type		Load Sensing HAWE Piston Pump				Load Sensing HAWE Piston Pump				Load Sensing HAWE Piston Pump			
			Maximum Operating Pressure			2,500				2,500				2,500		
Working Engine RPM (Throttle Advance)				1,250 RPM & 116% PTO				1,250 RPM & 116% PTO				1,250 RPM & 116% PTO				
Flow at Working RPM				50 GPM				50 GPM				50 GPM				
Oil Reservoir		Tank Capacity			51 gal				51 gal				51 gal			
		Filters			3 micron return filter with in-cab monitor, 100 mesh reusable suction screen				3 micron return filter with in-cab monitor, 100 mesh reusable suction screen				3 micron return filter with in-cab monitor, 100 mesh reusable suction screen			
Valves		Body Valve Type			Electric over hydraulic manifold, Multi-section stack valve combination, 50 GPM @ 2,500 psi relief valve to prevent overload damage				Electric over hydraulic manifold, Multi-section stack valve combination, 50 GPM @ 2,500 psi relief valve to prevent overload damage				Electric over hydraulic manifold, Multi-section stack valve combination, 50 GPM @ 2,500 psi relief valve to prevent overload damage			
		Tailgate Valve Type			Electric over hydraulic manifold, Multi-section stack valve combination, 13 GPM @ 2,500 psi relief valve to prevent overload damage				Electric over hydraulic manifold, Multi-section stack valve combination, 13 GPM @ 2,500 psi relief valve to prevent overload damage				Electric over hydraulic manifold, Multi-section stack valve combination, 13 GPM @ 2,500 psi relief valve to prevent overload damage			
Performance Specifications	Compaction Force		lbs.	117,000				117,000				117,000				
	Arm Cycle Time	Up		idle - 10-12 sec - 1,200 RPM - 7-8 sec				idle - 10-12 sec - 1,200 RPM - 7-8 sec				idle - 9-11 sec - 1,200 RPM - 5-6 sec				
		Complete		idle - 20-23 sec - 1,200 RPM - 14-17 sec				idle - 20-23 sec - 1,200 RPM - 14-17 sec				idle - 18-21 sec - 1,200 RPM - 11-14 sec				
	Packer Cycle Time			18-22 sec				18-22 sec				18-22 sec				
	Arm Lifting Capacity		lbs.	8,000				8,000				5,500 (8,000 optional)				
	Clearance-Stop-Tail-Back-Up-Lamp			FMVSS 108				FMVSS 108				FMVSS 108				
Odyssey Controls (Electric/Hydraulic)																

Please Note: All designs, specifications, and components are subject to change at the manufacturer's sole discretion at any time without notice. Data published herein is for information purposes only and shall not be construed to warrant suitability of the unit for any particular purpose, as performance may vary with the conditions encountered. The only warranty is our standard written Warranty Statement for this product at the time of shipment. © Copyright 2023 Heil Environmental, Inc. All rights reserved.



WE NEVER STOP WORKING FOR YOU

Half/Pack

Commercial High Compaction Front Loader



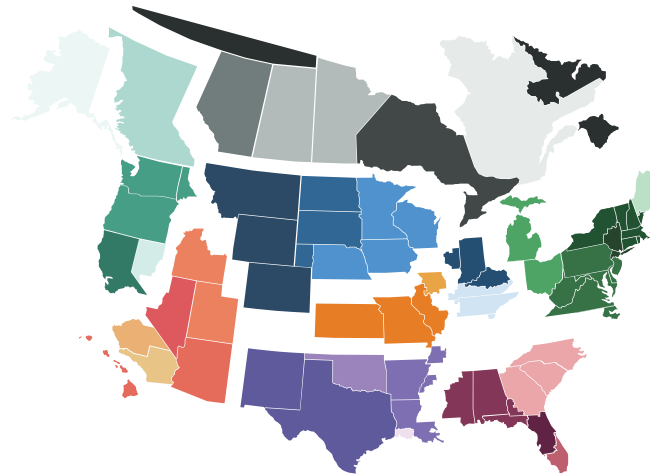
EXPEDITE THE PURCHASE OF YOUR HEIL UNIT THROUGH SOURCEWELL

Sourcewell Cooperative Purchasing Program has awarded Heil a nationally bid contract for “Solid Waste and Recycling Collection Equipment with Related Equipment, Accessories, and Supplies.” Through the Heil contract, Sourcewell members can purchase any of the Heil line of refuse and recycling equipment, including front-loading, side-loading, and rear-loading refuse collection vehicles, without having to create an RFP and send the project through a time-consuming duplicate bid process. By using the existing nationally bid contract, members can receive the products they need more quickly and cost effectively. Best of all, Sourcewell membership is free! Qualified agencies can join online via the Sourcewell purchasing website at www.sourcewell-mn.gov. To find out more about purchasing Heil equipment via the Sourcewell contract, please contact your local Heil Dealer at www.heil.com/dealers.



TRUST HEIL CERTIFIED OEM PARTS

Heil Certified OEM parts are the most reliable replacement parts for Heil refuse collection vehicles. They're made following the exact specifications and production processes on the same assembly lines as the parts originally installed on the bodies. This means that they fit perfectly every time. Heil uses only the highest-quality materials for parts that last - minimizing costly downtime. For more information on parts, contact your Heil dealer. Visit: www.heil.com/dealers to find the dealer nearest you.



RELY ON EXPERIENCED LOCAL SUPPORT

When you buy from Heil, you gain the aftermarket support of the industry's strongest network of dealers in North America. We stand behind our dealers, so you get the product support you need for the life of your products. Our dealers are also trained to help you find the best product for your particular route needs. To find the Heil dealer nearest you, visit: www.heil.com/dealers.



All Heil products are Connected Collections® ready. This is part of our vision, focused on helping fleet owners make better decisions, faster. For more information on ESG's Connected Collections, contact your local Heil dealer or visit us online at www.heil.com/connected-collections

www.heil.com



COUNT ON THE LOWEST TCC

Helping you save money is our passion, and we apply tremendous resources to advance our product and service offerings to improve the profitability of your business and provide the lowest Total Cost of Collection and the maximum return on your investment. You can be confident that choosing Heil equipment brings a long-term partnership with the industry leader.



CONFIGURATION ASSISTANCE

Chassis layout drawings are available through your local Heil dealer. To find your dealer, visit www.heil.com/dealers.



INDUSTRY-LEADING TRAINING

Heil has completely revamped their training programs with the addition of both the Heil Service Shack® and our four-tiered Nextelligence® Connected-Tech Training Program. Now, customers can visit the Heil Service Shack on the Heil website to learn the latest techniques and view helpful service and training videos any time, as well as sign up for Connected-Tech courses to better train technicians on Heil Refuse Products. Ensure your shops are servicing your Heil products correctly; check out the Heil training offerings at www.heil.com/nextelligence.